

WE BUILD ELECTRODES 2016  
QUALITY SUPPLIES

NEEDLES INNOVATIVE IDEAS EEG  
SILVER ELECTRODES SNAP LEADS

*Rochester*

GOLD ELECTRODES PERSONAL RELATIONSHIPS  
HORIZON RIBBONS PREP  
HORIZON RIBBONS

## EMG 1-4

- Page 1 MONOPOLAR NEEDLES
- Page 2 DETACHABLE MONOPOLAR NEEDLES / CONCENTRIC NEEDLES
- Page 3 INJECTABLE NEEDLES / DIGITAL RING & FIXED BAR ELECTRODES / REFERENCE NEEDLES
- Page 4 PICK-UP ELECTRODES / TEMPERATURE SENSORS / REUSABLE GROUND ELECTRODES

## Disposable Surface Electrodes 5-6

- Page 5 DISPOSABLE STICK-ON, GROUND & SIDE TAB ELECTRODES / ALLIGATOR CLIPS
- Page 6 DISPOSABLE SNAP ELECTRODES / REUSABLE SNAP LEADS

## EEG 7-11

- Page 7 DISC (CUP) ELECTRODES WITH KEVLAR WIRE
- Page 8 DISC (CUP) ELECTRODES WITH PVC WIRE / DISPOSABLE GOLD DISC ELECTRODES
- Page 9 DISC (CUP) ELECTRODES WITH RIBBON WIRE
- Page 10 DISC (CUP) ELECTRODES WITH SILICONE WIRE / BIO-POTENTIAL ELECTRODES / STAMPED DISCS
- Page 11 SKIN MARKERS / MEASURING TAPES / CALIPERS / NASOPHARYNGEAL & EAR CLIP ELECTRODES

## IOM 12-19

- Page 12 SINGLE SUBDERMAL NEEDLES
- Page 13 PAIRED SUBDERMAL NEEDLES
- Page 14 RIBBON SUBDERMAL NEEDLES
- Page 15 TWISTED SUBDERMAL NEEDLE SETS / CORKSCREW ELECTRODES
- Page 16 SURGICAL PROBES
- Page 17 SURGICAL PROBES (cont.)
- Page 19 SUREPOINT SUBDERMAL NEEDLES / LARYNGEAL ELECTRODES / ET TUBES

## PSG 20-22

- Page 20 RESPIRATION MONITORS
- Page 21 RESPIRATION MONITORS / AIRFLOW SENSORS
- Page 22 MOTION BUTTON / EFFORT BELTS / SNORING MICROPHONE & SENSOR

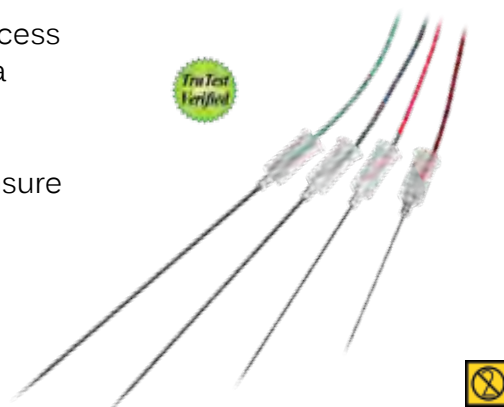
## Technologist Accessories 23-27

- Page 23 NUPREP / TEN20
- Page 24 ELEFIX / ELECTRODE JELLY / BLUNTED NEEDLES / COVER-ROLL & TAPE
- Page 25 ELENA ELECTRODE DOLLS & COLORING BOOKS
- Page 26 AIDS FOR APPLICATION AND CLEAN UP / IMAGING FRIENDLY™ ELECTRODES
- Page 27 ELECTRODE APPLICATOR / AIR PUMPS / FOOT VALVE & TUBING

## Product Information 29

## Rochester UltraPoint™ Monopolar Needles

- Coated with UltraCoat Insulation - Our specially developed process incorporates 50 years of experience to ensure every needle has a smooth, consistent coating with no insulation breaks
- Every needle passes our TruTest Quality Assurance System to ensure exceptional reliability and performance
- Needle wires are color-coded for quick ID
- Attached leads - the needle and wire are completely disposable
- Sharp, conical needle tip provides easy insertion with less bleeding



25 needles per box   2 ft. (.6 m) wire length   Sterile   Single patient use only

Part Number	Gauge (Needle Diameter)	Needle Length	Wire Color	Price (1-4 boxes)	Price (5-9 boxes)
016380	29 ga. (0.33 mm)	37 mm (1.5")	Red	\$ 74.00 box	\$ 70.00 box
016383	28 ga. (0.35 mm)	37 mm (1.5")	Orange	\$ 74.00 box	\$ 70.00 box
016384	28 ga. (0.35 mm)	45 mm (1.8")	Orange	\$ 74.00 box	\$ 70.00 box
016386	27 ga. (0.40 mm)	25 mm (1.0")	Blue	\$ 74.00 box	\$ 70.00 box
016388	27 ga. (0.40 mm)	37 mm (1.5")	Blue	\$ 74.00 box	\$ 70.00 box
016391	27 ga. (0.40 mm)	50 mm (2.0")	Blue	\$ 74.00 box	\$ 70.00 box
016393	26 ga. (0.45 mm)	37 mm (1.5")	Green	\$ 74.00 box	\$ 70.00 box
016395	26 ga. (0.45 mm)	50 mm (2.0")	Green	\$ 74.00 box	\$ 70.00 box
016397	26 ga. (0.45 mm)	75 mm (3.0")	Green	\$ 74.00 box	\$ 70.00 box

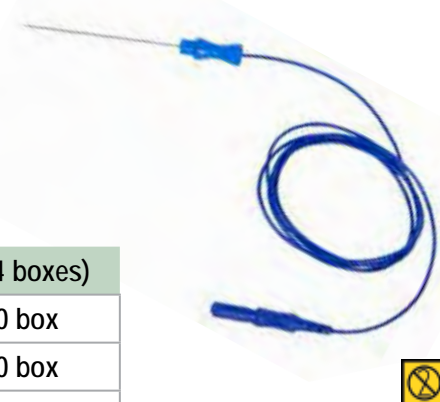
**QUANTITY DISCOUNT: Order 10+ boxes of any combination for \$62.00/box!**

## Technomed Monopolar Needles

- Clear and reliable signal
- Optimal patient comfort with ease of penetration and repositioning
- Tip design reduces bleeding
- Attached leads - the needle and wire are completely disposable

25 needles per box   2.5 ft. (.76 m) wire length   Sterile   Single patient use only

Part Number	Gauge (Needle Diameter)	Needle Length	Hub Color	Price (1-4 boxes)
TEAP2535335	28 ga. (0.35 mm)	25 mm (1.0")	Red	\$ 80.00 box
TEAP2545335	26 ga. (0.45 mm)	25 mm (1.0")	Yellow	\$ 80.00 box
TEAP3735335	28 ga. (0.35 mm)	37 mm (1.5")	Orange	\$ 80.00 box
TEAP3745335	26 ga. (0.45 mm)	37 mm (1.5")	Green	\$ 80.00 box
TEAP5045335	26 ga. (0.45 mm)	50 mm (2.0")	Blue	\$ 80.00 box
TEAP7545335	26 ga. (0.45 mm)	75 mm (3.0")	Violet	\$ 80.00 box



**QUANTITY DISCOUNT: Order 5+ boxes of any combination for \$70.00/box!**

## Technomed Detachable Monopolar Needles



25 needles per box   Cable sold separately   Sterile   Single patient use only

Part Number	Gauge (Needle Diameter)	Needle Length	Hub Color	Price (1-4 boxes)
TEAD2535008	28 ga. (0.35 mm)	25 mm (1.0")	Red	\$ 80.00 box
TEAD2545008	26 ga. (0.45 mm)	25 mm (1.0")	Yellow	\$ 80.00 box
TEAD3735008	28 ga. (0.35 mm)	37 mm (1.5")	Orange	\$ 80.00 box
TEAD3745008	26 ga. (0.45 mm)	37 mm (1.5")	Green	\$ 80.00 box
TEAD5045008	26 ga. (0.45 mm)	50 mm (2.0")	Blue	\$ 80.00 box
TEAD7545008	26 ga. (0.45 mm)	75 mm (3.0")	Violet	\$ 80.00 box

**QUANTITY DISCOUNT: Order 5+ boxes of any combination for \$70.00/box!**

Reusable Cables:



shielded



unshielded

Part Number	Description	Price
TED54451	Shielded Detachable Cable - 1.0 m length	\$ 40.00 cable
TED34231	Unshielded Detachable Cable - 0.6 m length	\$ 20.00 cable

## Technomed Concentric Needles



- Clear and reliable signal with new recording area design and shielded cable
- Optimal patient comfort with ease of penetration and repositioning
- Precise handling with new ergonomic hub and cable design

25 needles per box   Cable sold separately   Sterile   Single patient use only

Part Number	Gauge (Needle Diameter)	Needle Length	Hub Color	Price
853025	30 ga. (0.30 mm)	25 mm (1.0")	Red	\$ 180.00 box
852725	27 ga. (0.40 mm)	25 mm (1.0")	Yellow	\$ 180.00 box
852637	26 ga. (0.45 mm)	37 mm (1.5")	Green	\$ 180.00 box
852650	26 ga. (0.45 mm)	50 mm (2.0")	Blue	\$ 180.00 box

**QUANTITY DISCOUNT: Order 5+ boxes of any combination for \$170.00/box!**

Reusable Cable:



Part Number	Description	Price
850125	Detachable Cable - 5 Pin DIN - 1.25 m length	\$ 45.00 cable
850200	Detachable Cable - 5 Pin DIN - 2.0 m length	\$ 50.00 cable

# We BUILD

## Quality Supplies

The **TruTest Quality Assurance System** consists of multiple quality control tests that ensure the ultimate in reliability and performance for Rochester brand products. Unlike standard quality control procedures that rely on sampling averages or spot testing, all of the products in this catalog marked with the TruTest symbol have been individually inspected with at least two different tests to ensure correct functionality before leaving our facility.

**Our goal is 100% customer satisfaction and zero product defects so that you can count on our products every time you order.**



## Technomed Injectable Needles

- Leak-free, secure Luer Lock syringe connection
- Smooth insertion
- Attached leads - the needle and wire are completely disposable



10 needles per box    2.5 ft (0.75 m) wire length    Sterile    Single patient use only

Part Number	Gauge (Needle Diameter)	Needle Length	Hub Color	Price
982725	27 ga. (0.40 mm)	25 mm (1.0")	Yellow	\$ 145.00 box
983025	30 ga. (0.30 mm)	25 mm (1.0")	Red	\$ 145.00 box
982637	26 ga. (0.45 mm)	37 mm (1.5")	Green	\$ 145.00 box
982737	27 ga. (0.40 mm)	37 mm (1.5")	Orange	\$ 145.00 box
982550	25 ga. (0.50 mm)	50 mm (2.0")	Blue	\$ 145.00 box
982275	22 ga. (0.70 mm)	75 mm (3.0")	Purple	\$ 145.00 box



**QUANTITY DISCOUNT: Order 5+ boxes of any combination for \$135.00/box!**

## Rochester Digital Ring Electrodes

- Easy adjustability to fit all sizes
- Durable - designed for long term use

2 ft. (0.61 m) heavy duty Red and Black lead wires

Part Number	Size	Wire Color	Package Size	Price
038375	Adult	Red & Black	1 pair	\$ 30.00 pair



## Rochester Fixed Bar Electrodes

4 ft. (1.2 m) twisted lead wires    Features tin discs

Part Number	Contact Disc Diameter	Space Between Discs	Price
032543	9 mm (0.35")	3 cm (1.18")	\$ 25.00 each



## Rochester Reference Needles

- Used instead of surface electrodes for reference
- Attached leads - the needle and wire are completely disposable

25 needles per box    2 ft. (0.61 m) wire length    Sterile    Single patient use only

Part Number	Gauge (Needle Diameter)	Needle Length	Price
700998	29 ga. (0.30 mm)	12 mm (0.5")	\$ 63.00 box



# 4 EMG

## Rochester Tin Skin Pick-up Disc Electrodes



24" (0.61 m) twisted lead wires Features tin discs

Part Number	Disc Size	Wire Color	Package Size	Price
032238	9 mm	Red & Black	1 pair/pkg	\$ 12.00 pair

## No Touch Digital Infrared Thermometer



- Measure temperature during NCS or other tests
- No contact necessary - quick and easy
- Weighs just 5.5 oz. and includes carrying pouch
- Auto-shutoff after 8 seconds

Backlit Display 9V battery

Body Mode Ranges:

90°-109° F

32°-42.9° C

Part Number	Price
113060	\$ 40.00 each

Not available for sale to Canada

## Derma-Therm™ Temperature Bands



- Measure skin temperature during NCS or other tests
- Latex-Free
- Peel and stick, disposable

Ranges:

79°-101° F

26°-38° C

Part Number	Package Size	Price
2105PB	50/pkg	\$ 50.00 pkg
2100PB	100/pkg	\$ 90.00 pkg
2150PB	250/pkg	\$200.00 pkg

## Rochester Reusable Ground Electrodes



1.25" ≈ 32 mm

- Heavy-duty green leads
- Round grounds are stainless steel

Part Number	Size	Type	Wire Length	Price
035687	1.25" diameter	Stainless Steel	30" (0.76 m)	\$ 18.00 each
035689	1.25" diameter	Stainless Steel	4 ft. (1.2 m)	\$ 18.00 each

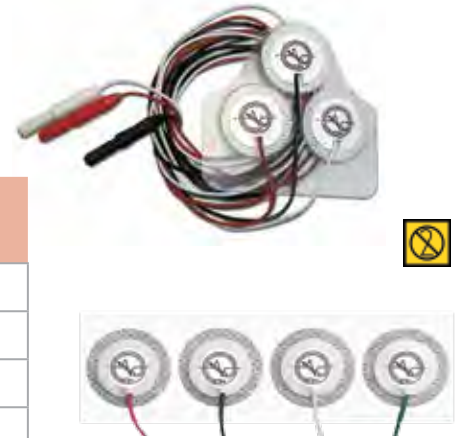


## *Rochester* Disposable Stick-on Electrodes

- Pre-gelled for fast, accurate and effective application
- Excellent adhesion for short-term or long-term use
- Attached lead wires are disposable

Single patient use only

Part Number	Wire Length	Electrodes/ Package	Lead Wire Colors Included in Package	Price
222000	3 ft. (0.91 m)	3/pkg	Red, Black, White	\$ 2.75 pkg
222111	6 ft. (1.83 m)	3/pkg	Red, Black, White	\$ 2.90 pkg
222466	6 ft. (1.83 m)	4/pkg	Red, Black, White, Green	\$ 3.75 pkg
222466-50	6 ft. (1.83 m)	4/pkg (50 pkg/box)	Red, Black, White, Green	\$175.00 box



## Technomed Plaque™ Disposable Stick-on Electrodes & Ground

Single patient use only

Part Number	Wire Length	Electrodes/ Package	Packages/ Box	Lead Wire Colors Included in Package	Price
222410-10	1.0 m	4/pkg	10 pkg/box	Red, Blue, Green, Black	\$ 37.50 box
222420-10	2.0 m	4/pkg	10 pkg/box	Red, Blue, Green, Black	\$ 37.50 box
222810-20	1.0 m	1/pkg	20 pkg/box	Green	\$ 42.00 box
222820-20	2.0 m	1/pkg	20 pkg/box	Green	\$ 42.00 box



## Disposable Side Tab Electrodes & *Rochester* Alligator Clips

Single patient use only

Part Number	Wire Length	Package Size	Price
-------------	-------------	--------------	-------

### Vermed® Side Tab Electrodes

310021-0	Need Alligator Clip	case of 1000	\$ 90.00 case
----------	---------------------	--------------	---------------

### Kendall™ NUTAB™ Side Tab Electrodes

388007	Need Alligator Clip	pack of 1000	\$ 50.00 pack
--------	---------------------	--------------	---------------

Part Number	Wire Length	Package Size	Price
-------------	-------------	--------------	-------

### Alligator Clips

Choose from Red, Black or Green Wire

602924-(R or B or G)	2 ft. (0.61 m)	each	\$ 7.00 each
602996-(R or B or G)	8 ft. (2.45 m)	each	\$ 9.00 each

3 color package - Red, Black & Green

602936-3	3 ft. (0.92 m)	3/pkg (R, B, G)	\$ 15.00 pkg
----------	----------------	-----------------	--------------



# 6 Disposable Surface Electrodes

## Disposable Cardiac Snap Electrodes

Vermed®



MEDITRACE®



Single patient use only

Part Number	Electrode Size	Package Size	Price
-------------	----------------	--------------	-------

### Vermed® Pre-gelled Breathable Cardiac Snap Electrodes

353060	0.75 inch (19 mm)	60/pkg	\$ 20.00 pkg
353600	0.75 inch (19 mm)	600/case	\$ 190.00 case

### MEDITRACE® Pre-gelled Cardiac Snap Electrodes

311124-P	Small (1-1/8" x 1-1/4")	30/pouch	\$ 6.60 pouch
311124-0	Small (1-1/8" x 1-1/4")	600/case	\$ 120.00 case
310781-0	Large (1-7/16" x 1-11/16")	600/case	\$ 120.00 case

## Rochester Solid Color Snap Leads



- Durable & very flexible
- Bright, color-coded wires
- 5 leads per package:  
Red, Black, Green, Brown, & White

Part Number	Wire Length	Price
652040	40" (1.0 m)	\$ 20.00 pkg
652072	6 ft. (1.8 m)	\$ 22.00 pkg
652120	10 ft. (3.1 m)	\$ 25.00 pkg

## Rochester Premium Shiny Silver Snap Leads



- Extremely Tough & Durable
- Shiny, Reflective Silver Wires
- Color coded on both ends

2 snap leads per pkg

Part Number	Wire Length	Colors	Price
602899	5 ft. (1.5 m)	Red & Black	\$ 24.00 pkg
602831	8 ft. (2.5 m)	Red & Black	\$ 32.00 pkg
602890	10 ft. (3.1 m)	Red & Black	\$ 40.00 pkg
602865	5 ft. (1.5 m)	Green & White	\$ 24.00 pkg
602868	8 ft. (2.5 m)	Green & White	\$ 32.00 pkg
602861	10 ft. (3.1 m)	Green & White	\$ 40.00 pkg



## AN UNBEATABLE COMBINATION OF QUALITY AND VALUE!

- High performance electrodes made with incredibly strong Kevlar® reinforced wire
- Every electrode is verified by our TruTest Quality Assurance System
- Sold 10 per box with 10 different colors
- Every electrode is electrically tested
- Made using NEW adhesive shrink tubing to prevent fluid leaks & provide extra strength
- Packaged in a reusable box



## MADE WITH ULTIMA™ MOLDED DISCS:



- Molded **Gold** Electrodes are .999 Pure Silver plated in 24k Gold
- Molded **Silver** Electrodes are .999 Pure Silver



10 electrodes per box

Part Number	Disc Size	Disc Type	Wire Length	Price
BMS045T15-4	9 mm	Molded <b>Gold</b>	4 ft. (1.2 m)	\$ 88.00 box
BMS045T15-5	9 mm	Molded <b>Gold</b>	5 ft. (1.5 m)	\$ 88.00 box
BMS045T15-6	9 mm	Molded <b>Gold</b>	6 ft. (1.8 m)	\$ 88.00 box
BMS045T15-8	9 mm	Molded <b>Gold</b>	8 ft. (2.5 m)	\$ 93.00 box
BMS045T15-10	9 mm	Molded <b>Gold</b>	10 ft. (3.1 m)	\$ 93.00 box

BMS042T15-4	9 mm	Molded <b>Silver</b>	4 ft. (1.2 m)	\$ 88.00 box
BMS042T15-5	9 mm	Molded <b>Silver</b>	5 ft. (1.5 m)	\$ 88.00 box
BMS042T15-6	9 mm	Molded <b>Silver</b>	6 ft. (1.8 m)	\$ 88.00 box



## Rochester EverLast™ Disc (Cup) Electrodes with Single PVC Wire

### MADE WITH ULTIMA™ MOLDED DISCS

- Molded **Gold** Electrodes are .999 Pure Silver plated in 24k Gold
- Molded **Silver** Electrodes are .999 Pure Silver
- Made using NEW adhesive shrink tubing to prevent fluid leaks & provide extra strength
- Every electrode is verified by our TruTest Quality Assurance System
- Every electrode is electrically tested



10 electrodes per box

Part Number	Disc Size	Disc Type	Wire Length	Price
BMS037T15-4	9 mm	Molded <b>Gold</b>	4 ft. (1.2 m)	\$ 81.00 box
BMS037T15-5	9 mm	Molded <b>Gold</b>	5 ft. (1.5 m)	\$ 81.00 box
BMS037T15-6	9 mm	Molded <b>Gold</b>	6 ft. (1.8 m)	\$ 81.00 box
BMS037T15-8	9 mm	Molded <b>Gold</b>	8 ft. (2.5 m)	\$ 85.00 box
BMS037T15-10	9 mm	Molded <b>Gold</b>	10 ft. (3.1 m)	\$ 85.00 box
BMS017T15-4	9 mm	Molded <b>Silver</b>	4 ft. (1.2 m)	\$ 78.00 box

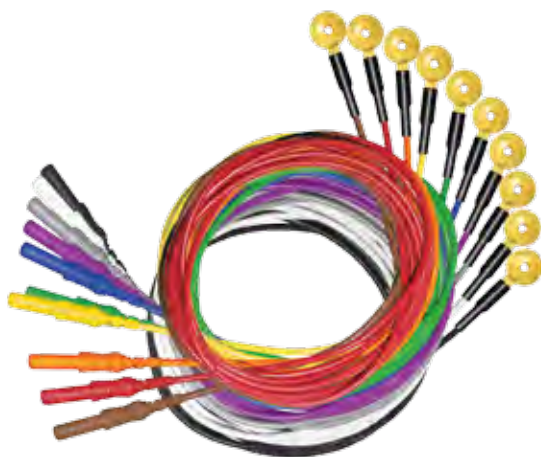
## Rochester GoldSelect™ Disposable EEG Disc (Cup) Electrodes

### The One and Only Gold Disposable Electrode

- Convenient for EEG, PSG, LTM, & IOM
- Great for use on patients in Isolation
- 24k gold plated discs
- Sanitary, affordable & convenient
- Each package contains 10 vibrant colors of PVC wire



Discounts available!



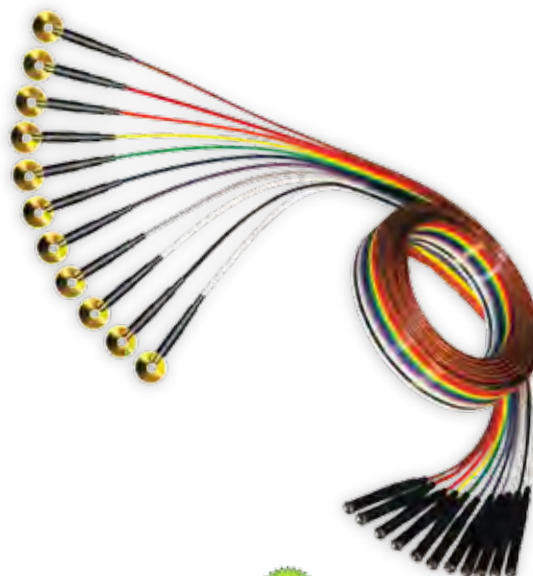
Low profile shrink connection enhances patient comfort & cup shape holds plenty of paste!

Part Number	Disc Size	Disc Type	Wire Length	Price
003748	9 mm	Stamped <b>Gold</b>	4 ft. (1.2 m)	\$ 9.00 pkg
003760	9 mm	Stamped <b>Gold</b>	5 ft. (1.5 m)	\$ 9.00 pkg
003772	9 mm	Stamped <b>Gold</b>	6 ft. (1.8 m)	\$ 9.00 pkg
003710	9 mm	Stamped <b>Gold</b>	10 ft. (3.1 m)	\$ 11.00 pkg

Call today to try out free samples of our GoldSelect™ Electrodes!

## *Rochester* Everlast™ Disc (Cup) Electrodes with Ribbon PVC Wire

- Ribbon style reduces movement & sway artifact
- Extremely flexible PVC wire in 10 different colors, 11 electrodes/ribbon
- Sets can be easily pulled apart and separated into smaller arrays or singles as needed
- Two sets provide enough electrodes for a complete 10-20 system
- Made using NEW adhesive shrink tubing to prevent fluid leaks & provide extra strength



### MADE WITH STAMPED OR ULTIMA™ MOLDED DISCS

- Molded **Gold** Electrodes are .999 Pure Silver plated in 24k Gold
- Molded **Silver** Electrodes are .999 Pure Silver
- Stamped **Tin** Electrodes are .999 Pure Tin

1 ribbon = 11 electrodes

Part Number	Disc Size	Disc Type	Wire Length	Price
MS370T15-4	9 mm	Molded <b>Gold</b>	4 ft. (1.2 m)	\$ 80.00 set
MS370T15-5	9 mm	Molded <b>Gold</b>	5 ft. (1.5 m)	\$ 80.00 set
MS370T15-6	9 mm	Molded <b>Gold</b>	6 ft. (1.8 m)	\$ 80.00 set
MS370T15-8	9 mm	Molded <b>Gold</b>	8 ft. (2.5 m)	\$ 85.00 set
MS370T15-10	9 mm	Molded <b>Gold</b>	10 ft. (3.1 m)	\$ 85.00 set
MS170T15-4	9 mm	Molded <b>Silver</b>	4 ft. (1.2 m)	\$ 78.00 set
MS170T15-5	9 mm	Molded <b>Silver</b>	5 ft. (1.5 m)	\$ 78.00 set
MS170T15-6	9 mm	Molded <b>Silver</b>	6 ft. (1.8 m)	\$ 78.00 set
MS170T15-10	9 mm	Molded <b>Silver</b>	10 ft. (3.1 m)	\$ 82.00 set
S0110T15-3	6 mm	Stamped <b>Tin</b>	3 ft. (0.9 m)	\$ 55.00 set
S0110T15-4	6 mm	Stamped <b>Tin</b>	4 ft. (1.2 m)	\$ 55.00 set
S0120T15-4	9 mm	Stamped <b>Tin</b>	4 ft. (1.2 m)	\$ 60.00 set
S0120T15-5	9 mm	Stamped <b>Tin</b>	5 ft. (1.5 m)	\$ 60.00 set
S0120T15-6	9 mm	Stamped <b>Tin</b>	6 ft. (1.8 m)	\$ 60.00 set
S0120T15-8	9 mm	Stamped <b>Tin</b>	8 ft. (2.5 m)	\$ 62.00 set

## Rochester EverLast™ Disc (Cup) Electrodes with SILICONE Wire



5 colors    5 electrodes per pkg

- Made with premium silicone leads
- Made with your choice of ULTIMA™  
**Gold** or **Silver** Molded Discs

Part Number	Disc Size	Disc Type	Wire Length	Price
MS610515	9 mm	Molded <b>Silver</b>	6 ft. (1.8 m)	\$ 40.00 pkg
MS618315	9 mm	Molded <b>Silver</b>	8 ft. (2.5 m)	\$ 40.00 pkg
MS615015	9 mm	Molded <b>Gold</b>	4 ft. (1.2 m)	\$ 42.00 pkg
MS616515	9 mm	Molded <b>Gold</b>	6 ft. (1.8 m)	\$ 42.00 pkg

## Rochester NoiseFree™ Bio-Potential Electrodes



- Extremely stable recordings / Very low artifact
- Use with Adhesive Collars below: Part # 200100-M

11 mm (0.43") whole cup diameter    3 mm (0.12") metal recording cavity diameter

Part Number	Recording Metal	Set Type	Wire Length	Package Size	Price
-------------	-----------------	----------	-------------	--------------	-------

### NoiseFree™ Bio-Potential Electrodes - PVC Ribbon Wires

S015315	<b>Gold</b>	Ribbon	6 ft. (1.8 m)	11/set	\$ 96.00 set
---------	-------------	--------	---------------	--------	--------------

### NoiseFree™ Bio-Potential Electrodes - SILICONE Individual Wires

S018315	<b>Silver</b> /Chloride	Individual	4 ft. (1.2 m)	5/pkg	\$ 52.00 pkg
S016315	<b>Silver</b> /Chloride	Individual	6 ft. (1.8 m)	5/pkg	\$ 52.00 pkg
S016415	<b>Silver</b> /Chloride	Individual	8 ft. (2.5 m)	5/pkg	\$ 54.00 pkg
S017815	<b>Gold</b>	Individual	6 ft. (1.8 m)	5/pkg	\$ 52.00 pkg
S018115	<b>Gold</b>	Individual	8 ft. (2.5 m)	5/pkg	\$ 54.00 pkg

### Two-Sided Adhesive Collars

200100-M	N/A	Roll	N/A	1000/pkg	\$ 62.00 pkg
----------	-----	------	-----	----------	--------------



Adhesive Collars:  
4 mm inner diameter &  
19 mm outer diameter

## Replacement Stamped Electrode Discs



Part Number	Disc Size	Disc Type	Package Size	Price
00230T-C	6 mm	Stamped <b>Tin</b>	100/pkg	\$ 56.00 pkg
00750T-C	9 mm	Stamped <b>Tin</b>	100/pkg	\$106.00 pkg

## Skin Markers, Centimeter/Inch Measuring Tapes, & Calipers

Part Number	Type	Package Size	Price
-------------	------	--------------	-------

### Skin Markers

200704	Blue	12/pkg	\$ 14.00 pkg
200705	Crimson Red	12/pkg	\$ 14.00 pkg



### Measuring Tapes

- Metric on one side / English on the other
- Measurement markings start at the end of tape

500600	Plastic	1 each	\$ 7.50 each
--------	---------	--------	--------------



### Calipers

- Tightening screw for extremely accurate adjustment
- Used to measure electrode points
- Blunted tips

600750	Screw Adjust	1 each	\$ 29.00 each
--------	--------------	--------	---------------



## Rochester Nasopharyngeal Electrodes

- Flexible for easy use and maximum comfort

6 ft. (1.8 m) silicone lead wire

Part Number	Size	Ball Type	Package Size	Price
S0152015	Adult	Silver	2/pkg	\$ 60.00 pkg



## Rochester Ear Clip Electrodes

- Easily clips to the ear lobe as a reference electrode
- Quick and convenient option when mastoid references are contaminated by EKG

6 ft. (1.8 m) PVC lead wire

Part Number	Disc Size	Disc Type	Package Size	Price
SE065715	9 mm	Silver	2/pkg	\$ 40.00 pkg
SE094515	9 mm	Gold	2/pkg	\$ 40.00 pkg





## Rochester Horizon™ Single Subdermal Needle Electrodes

### How It Works

Check one box in each row to build your personalized set of Single Subdermal Needles.

When you're done, call, email or fax us this page for your free quote.

We'll create a custom solution that is **MADE JUST FOR YOU** at the **BEST POSSIBLE PRICE** with **NO CONTRACTS**.

### That's Not All

We can customize to your exact specifications...

Need longer or shorter leads?

Want different packaging options?

Need to mix and match colors, lengths and styles?

**Call us and we'll make it happen!**



Sterile    Needle Diameter: 27 ga. (0.4 mm)    Single patient use only

Needle Length / Style	 <div style="background-color: yellow; border: 1px solid black; padding: 5px; text-align: center;"> <b>13 mm</b>  Standard Needle </div> <input type="checkbox"/>	 <div style="background-color: #00FF00; border: 1px solid black; padding: 5px; text-align: center;"> <b>6 mm</b>  Short Needle </div> <input type="checkbox"/>	 <div style="background-color: orange; border: 1px solid black; padding: 5px; text-align: center;"> <b>19 mm</b>  Long Needle </div> <input type="checkbox"/>	 <div style="background-color: pink; border: 1px solid black; padding: 5px; text-align: center;"> <b>24 mm</b>  Extra Long Needle </div> <input type="checkbox"/>	 <div style="background-color: blue; border: 1px solid black; padding: 5px; text-align: center;"> <b>13 mm</b>  Hook / Bent Needle </div> <input type="checkbox"/>
Lead Length	<div style="display: flex; justify-content: space-around; margin-bottom: 10px;"> <div style="border: 2px solid green; border-radius: 15px; padding: 10px; text-align: center;"> <b>1.5 meter</b>  (5 feet)* </div> <div style="border: 2px solid magenta; border-radius: 15px; padding: 10px; text-align: center;"> <b>1.8 meter</b>  (6 feet)* </div> <div style="border: 2px solid red; border-radius: 15px; padding: 10px; text-align: center;"> <b>2.5 meter</b>  (8 feet)* </div> </div> <div style="display: flex; justify-content: space-around;"> <input type="checkbox"/> <input type="checkbox"/> <input type="checkbox"/> </div>				
Colors & Packaging	<div style="display: flex; justify-content: space-around; margin-bottom: 10px;"> <div style="border: 1px solid black; padding: 5px; text-align: center;"> <b>24 Needles/box</b>  4 each of  <div style="display: flex; flex-wrap: wrap; justify-content: space-around;"> <div style="display: flex; align-items: center;"><span style="display: inline-block; width: 10px; height: 10px; background-color: black; margin-right: 5px;"></span> Black</div> <div style="display: flex; align-items: center;"><span style="display: inline-block; width: 10px; height: 10px; background-color: white; margin-right: 5px;"></span> White</div> <div style="display: flex; align-items: center;"><span style="display: inline-block; width: 10px; height: 10px; background-color: red; margin-right: 5px;"></span> Red</div> <div style="display: flex; align-items: center;"><span style="display: inline-block; width: 10px; height: 10px; background-color: green; margin-right: 5px;"></span> Green</div> <div style="display: flex; align-items: center;"><span style="display: inline-block; width: 10px; height: 10px; background-color: blue; margin-right: 5px;"></span> Blue</div> <div style="display: flex; align-items: center;"><span style="display: inline-block; width: 10px; height: 10px; background-color: yellow; margin-right: 5px;"></span> Yellow</div> </div> </div> <div style="border: 1px solid black; padding: 5px; text-align: center;"> <b>24 Needles/box</b>  2 each of  <div style="display: flex; flex-wrap: wrap; justify-content: space-around;"> <div style="display: flex; align-items: center;"><span style="display: inline-block; width: 10px; height: 10px; background-color: black; margin-right: 5px;"></span> Black</div> <div style="display: flex; align-items: center;"><span style="display: inline-block; width: 10px; height: 10px; background-color: white; margin-right: 5px;"></span> White</div> <div style="display: flex; align-items: center;"><span style="display: inline-block; width: 10px; height: 10px; background-color: red; margin-right: 5px;"></span> Red</div> <div style="display: flex; align-items: center;"><span style="display: inline-block; width: 10px; height: 10px; background-color: green; margin-right: 5px;"></span> Green</div> <div style="display: flex; align-items: center;"><span style="display: inline-block; width: 10px; height: 10px; background-color: blue; margin-right: 5px;"></span> Blue</div> <div style="display: flex; align-items: center;"><span style="display: inline-block; width: 10px; height: 10px; background-color: yellow; margin-right: 5px;"></span> Yellow</div> <div style="display: flex; align-items: center;"><span style="display: inline-block; width: 10px; height: 10px; background-color: gray; margin-right: 5px;"></span> Gray</div> <div style="display: flex; align-items: center;"><span style="display: inline-block; width: 10px; height: 10px; background-color: orange; margin-right: 5px;"></span> Orange</div> <div style="display: flex; align-items: center;"><span style="display: inline-block; width: 10px; height: 10px; background-color: brown; margin-right: 5px;"></span> Brown</div> <div style="display: flex; align-items: center;"><span style="display: inline-block; width: 10px; height: 10px; background-color: purple; margin-right: 5px;"></span> Purple</div> <div style="display: flex; align-items: center;"><span style="display: inline-block; width: 10px; height: 10px; background-color: lightblue; margin-right: 5px;"></span> L. Blue</div> <div style="display: flex; align-items: center;"><span style="display: inline-block; width: 10px; height: 10px; background-color: pink; margin-right: 5px;"></span> Pink</div> </div> </div> <div style="border: 1px solid black; padding: 5px; text-align: center;"> <b>20 Needles/box</b>  2 each of  <div style="display: flex; flex-wrap: wrap; justify-content: space-around;"> <div style="display: flex; align-items: center;"><span style="display: inline-block; width: 10px; height: 10px; background-color: black; margin-right: 5px;"></span> Black</div> <div style="display: flex; align-items: center;"><span style="display: inline-block; width: 10px; height: 10px; background-color: white; margin-right: 5px;"></span> White</div> <div style="display: flex; align-items: center;"><span style="display: inline-block; width: 10px; height: 10px; background-color: red; margin-right: 5px;"></span> Red</div> <div style="display: flex; align-items: center;"><span style="display: inline-block; width: 10px; height: 10px; background-color: green; margin-right: 5px;"></span> Green</div> <div style="display: flex; align-items: center;"><span style="display: inline-block; width: 10px; height: 10px; background-color: blue; margin-right: 5px;"></span> Blue</div> <div style="display: flex; align-items: center;"><span style="display: inline-block; width: 10px; height: 10px; background-color: yellow; margin-right: 5px;"></span> Yellow</div> <div style="display: flex; align-items: center;"><span style="display: inline-block; width: 10px; height: 10px; background-color: gray; margin-right: 5px;"></span> Gray</div> <div style="display: flex; align-items: center;"><span style="display: inline-block; width: 10px; height: 10px; background-color: orange; margin-right: 5px;"></span> Orange</div> <div style="display: flex; align-items: center;"><span style="display: inline-block; width: 10px; height: 10px; background-color: brown; margin-right: 5px;"></span> Brown</div> <div style="display: flex; align-items: center;"><span style="display: inline-block; width: 10px; height: 10px; background-color: purple; margin-right: 5px;"></span> Purple</div> </div> </div> </div> <div style="display: flex; justify-content: space-around; margin-top: 10px;"> <div style="text-align: center;">A <input type="checkbox"/></div> <div style="text-align: center;">B <input type="checkbox"/></div> <div style="text-align: center;">C <input type="checkbox"/></div> </div>				

\* English measurements are approximate.

Name \_\_\_\_\_ Company \_\_\_\_\_  
Phone \_\_\_\_\_ Email \_\_\_\_\_

**Don't want to customize? Simply choose one of our most popular options:**

Part Number	Needle Length	Quantity/Package	Lead Length	Color Group
S81015-C-20	13 mm	20/box	1.5 m (5 ft.)	Color Group C
S81015-A-24	13 mm	24/box	1.5 m (5 ft.)	Color Group A
S81025-C-20	13 mm	20/box	2.5 m (8 ft.)	Color Group C
S81025-A-24	13 mm	24/box	2.5 m (8 ft.)	Color Group A
S91615-A-24	6 mm	24/box	1.5 m (5 ft.)	Color Group A
S81915-A-24	19 mm	24/box	1.5 m (5 ft.)	Color Group A

## Rochester Horizon™ Paired Subdermal Needle Electrodes

### How It Works

Check one box in each row to build your personalized set of Paired Subdermal Needles. When you're done, call, email or fax us this page for your free quote. We'll create a custom solution that is **MADE JUST FOR YOU** at the **BEST POSSIBLE PRICE** with **NO CONTRACTS**.

### That's Not All

We can customize to your exact specifications...  
Need longer or shorter leads?  
Want different packaging options?  
Need to mix and match colors, lengths and styles?

**Call us and we'll make it happen!**



Sterile    Needle Diameter: 27 ga. (0.4 mm)    Single patient use only

Lead Style	<div style="display: inline-block; border: 1px solid black; background-color: #ffcccc; padding: 5px; margin: 5px;">Parallel Pairs</div> <div style="display: inline-block; border: 1px solid black; background-color: #ccffff; padding: 5px; margin: 5px;">Twisted Pairs</div>					
Needle Length / Style	 <div style="border: 1px solid black; background-color: #ffff00; padding: 5px; width: 100px;">13 mm Standard Needle</div> <input type="checkbox"/>	 <div style="border: 1px solid black; background-color: #00ffcc; padding: 5px; width: 100px;">6 mm Short Needle</div> <input type="checkbox"/>	 <div style="border: 1px solid black; background-color: #ffcc00; padding: 5px; width: 100px;">19 mm Long Needle</div> <input type="checkbox"/>	 <div style="border: 1px solid black; background-color: #cc00ff; padding: 5px; width: 100px;">13 mm Hook / Bent Needle</div> <input type="checkbox"/>		
Lead Length	<div style="display: inline-block; border: 1px solid black; background-color: #00ff00; border-radius: 15px; padding: 10px; margin: 5px;">1.5 meter (5 feet)*</div> <div style="display: inline-block; border: 1px solid black; background-color: #ff0000; border-radius: 15px; padding: 10px; margin: 5px;">2.5 meter (8 feet)*</div>					
Colors & Packaging	<div style="border: 1px solid black; padding: 5px; width: 150px;"> <p>20 Pairs/box These colors paired with Black x 2 and White x 2</p> <div style="display: flex; justify-content: space-around;"> <div> <span style="color: red;">■</span> Red  <span style="color: blue;">■</span> Blue  <span style="color: orange;">■</span> Orange         </div> <div> <span style="color: green;">■</span> Green  <span style="color: yellow;">■</span> Yellow         </div> </div> </div> <div style="display: inline-block; border: 1px solid black; padding: 5px; width: 150px;"> <p>20 Pairs/box These colors paired with Black x 2 and White x 2</p> <div style="display: flex; justify-content: space-around;"> <div> <span style="color: gray;">■</span> Gray  <span style="color: purple;">■</span> Purple  <span style="color: lightblue;">■</span> Light Blue         </div> <div> <span style="color: brown;">■</span> Brown  <span style="color: pink;">■</span> Pink         </div> </div> </div> <div style="display: inline-block; border: 1px solid black; padding: 5px; width: 150px;"> <p>20 Pairs/box All colors from Group #1 &amp; Group #2 paired with Black x 1 and White x 1</p> <div style="display: flex; justify-content: space-around;"> <div> <span style="color: red;">■</span>  <span style="color: blue;">■</span>  <span style="color: orange;">■</span>  <span style="color: gray;">■</span> </div> <div> <span style="color: green;">■</span>  <span style="color: yellow;">■</span>  <span style="color: purple;">■</span>  <span style="color: brown;">■</span> </div> </div> </div>			<div style="border: 1px solid black; width: 40px; height: 40px; margin: 0 auto;"></div> <p>1 <input type="checkbox"/></p>	<div style="border: 1px solid black; width: 40px; height: 40px; margin: 0 auto;"></div> <p>2 <input type="checkbox"/></p>	<div style="border: 1px solid black; width: 40px; height: 40px; margin: 0 auto;"></div> <p>3 <input type="checkbox"/></p>

\* English measurements are approximate.

Name \_\_\_\_\_ Company \_\_\_\_\_

Phone \_\_\_\_\_ Email \_\_\_\_\_

**Don't want to customize? Simply choose one of our most popular options:**

Part Number	Pair Style	Needle Length	Quantity/Package	Lead Length	Color Group
S82025-PT1-20	Twisted	13 mm	20/box	2.5 m (8 ft.)	Color Group 1
S82025-PT2-20	Twisted	13 mm	20/box	2.5 m (8 ft.)	Color Group 2
S82025-PT3-20	Twisted	13 mm	20/box	2.5 m (8 ft.)	Color Group 3
S82015-PT1-20	Twisted	13 mm	20/box	1.5 m (5 ft.)	Color Group 1
S82015-PT3-20	Twisted	13 mm	20/box	1.5 m (5 ft.)	Color Group 3
S83025-PL1-20	Parallel	13 mm	20/box	2.5 m (8 ft.)	Color Group 1
S83025-PL3-20	Parallel	13 mm	20/box	2.5 m (8 ft.)	Color Group 3

## Rochester Horizon™ Ribbon Subdermal Needle Electrodes

Flexible, tangle-free parallel lead wires that come in color-coded ribbons of 5-10 leads.

- Reduces prep time
- Decreases artifact
- Easier to manage



### How It Works

Check one box in each row to build your personalized set of Ribbon Subdermal Needles. When you're done, call, email or fax us this page for your free quote. We'll create a custom solution that is **MADE JUST FOR YOU** at the **BEST POSSIBLE PRICE** with [NO CONTRACTS](#).

### That's Not All

Choose how many leads you want in your ribbon and then completely customize your color scheme to fit your exact specifications.

#### COLOR ABBREVIATION KEY:

Black	<input type="checkbox"/> BK	Red	<input type="checkbox"/> RD	Blue	<input type="checkbox"/> BU
White	<input type="checkbox"/> WH	Orange	<input type="checkbox"/> OR	L. Blue	<input type="checkbox"/> LB
Gray	<input type="checkbox"/> GY	Yellow	<input type="checkbox"/> YW	Purple	<input type="checkbox"/> PR
Brown	<input type="checkbox"/> BR	Green	<input type="checkbox"/> GR	Pink	<input type="checkbox"/> PK

Sterile    Needle Diameter: 27 ga. (0.4 mm)    Single patient use only

Needle Length / Style	<input type="checkbox"/> 13 mm Standard Needle	<input type="checkbox"/> 6 mm Short Needle	<input type="checkbox"/> 19 mm Long Needle	<input type="checkbox"/> 24 mm Extra Long Needle	<input type="checkbox"/> 13 mm Hook / Bent Needle	
Lead Length	<input type="checkbox"/> 1.5 meter (5 feet)*		<input type="checkbox"/> 2.0 meter (6.5 feet)*		<input type="checkbox"/> 2.5 meter (8 feet)*	
Leads	5	6	7	8	9	10
Choose Your Custom Lead Colors						

\* English measurements are approximate.

Name \_\_\_\_\_ Company \_\_\_\_\_

Phone \_\_\_\_\_ Email \_\_\_\_\_

Don't want to customize? Simply choose one of our most popular options:

Part Number	Needle Length	# of Wires	Lead Length	Lead Color Scheme	Typical Use
S86015-R1	13 mm	6	1.5 m (5 ft.)	<input type="checkbox"/> RD <input type="checkbox"/> YW <input type="checkbox"/> GR <input type="checkbox"/> BU <input type="checkbox"/> WH <input type="checkbox"/> BK	Head
S86025-R1	13 mm	6	2.5 m (8 ft.)	<input type="checkbox"/> RD <input type="checkbox"/> YW <input type="checkbox"/> GR <input type="checkbox"/> BU <input type="checkbox"/> WH <input type="checkbox"/> BK	Head
S85015-R5	13 mm	5	1.5 m (5 ft.)	<input type="checkbox"/> RD <input type="checkbox"/> YW <input type="checkbox"/> GR <input type="checkbox"/> BU <input type="checkbox"/> WH	Head
S88015-R2	13 mm	8	1.5 m (5 ft.)	<input type="checkbox"/> PK <input type="checkbox"/> RD <input type="checkbox"/> YW <input type="checkbox"/> GR <input type="checkbox"/> BU <input type="checkbox"/> WH <input type="checkbox"/> BK <input type="checkbox"/> LB	Head & Erbs
S80025-R10W	13 mm	10	2.5 m (8 ft.)	<input type="checkbox"/> RD <input type="checkbox"/> WH <input type="checkbox"/> OR <input type="checkbox"/> WH <input type="checkbox"/> YW <input type="checkbox"/> WH <input type="checkbox"/> GR <input type="checkbox"/> WH <input type="checkbox"/> BU <input type="checkbox"/> WH	Extremities
S80025-R10B	13 mm	10	2.5 m (8 ft.)	<input type="checkbox"/> RD <input type="checkbox"/> BK <input type="checkbox"/> OR <input type="checkbox"/> BK <input type="checkbox"/> YW <input type="checkbox"/> BK <input type="checkbox"/> GR <input type="checkbox"/> BK <input type="checkbox"/> BU <input type="checkbox"/> BK	Extremities

## Rochester Horizon™ MultiLead™ Twisted Subdermal Needle Electrodes

Save time in the OR without compromising sterility!



- Convenient and easy to use
- Incredibly tight twisting
- Plastic slide can be adjusted, separating wires to desired lengths
- Customization options available
- Quantity discounts available



Sterile Needle Diameter: 27 ga. (0.4 mm) Single patient use only

Part Number	Number of Leads	Lead Colors	Lead Length
S85015-T5	5 Leads	Red, Yellow, Green, Blue, White	1.5 m
S86015-T1	6 Leads	Red, Yellow, Green, Blue, White, Black	1.5 m
S85025-T5	5 Leads	Red, Yellow, Green, Blue, White	2.5 m
S86025-T1	6 Leads	Red, Yellow, Green, Blue, White, Black	2.5 m

## Technomed Corkscrew Electrodes

- Flexible grip makes electrode easy to handle and insert
- Can be used for both recording & stimulating
- Quantity discounts available



Sterile Needle Diameter: 23 ga. (0.6 mm) Single patient use only 24 per box, 4 of each color

Part Number	Lead Colors	Wire Length	Price
105115-24	Red, Black, Yellow, Blue, Green, White	1.2 m	\$ 150.00 pkg

**We BUILD**  
American Products

Rochester products create American jobs. Not only do we employ Americans for sales, management, and shipping positions, we also contribute to domestic jobs in packaging, designing, manufacturing, quality control, and assembly. When you purchase from Rochester, you are supporting a company that works hard every day to continue manufacturing and assembling high quality products in America.

This commitment to domestic manufacturing also helps you. Keeping our production and inspection facilities close to home ensures that we can maintain direct oversight over our Quality Control procedures.



## Surgical Stimulating Probes &amp; Lantern Laryngeal Electrode



Stimulating Probes are designed to stimulate nerves during surgery. A variety of probes are available to allow coarse or precise stimulation. All probes terminate with DIN 42802 touchproof connectors, and may be used with any compatible and appropriate nerve monitor or stimulator.

Concentric Probe

Pedicule Screw Probe  
3mm ball

Bipolar Probe

Pedicule Screw Probe  
2.3 mm ball

Monopolar Probe



Sold 10 per box unless otherwise specified

Sterile

Single patient use only

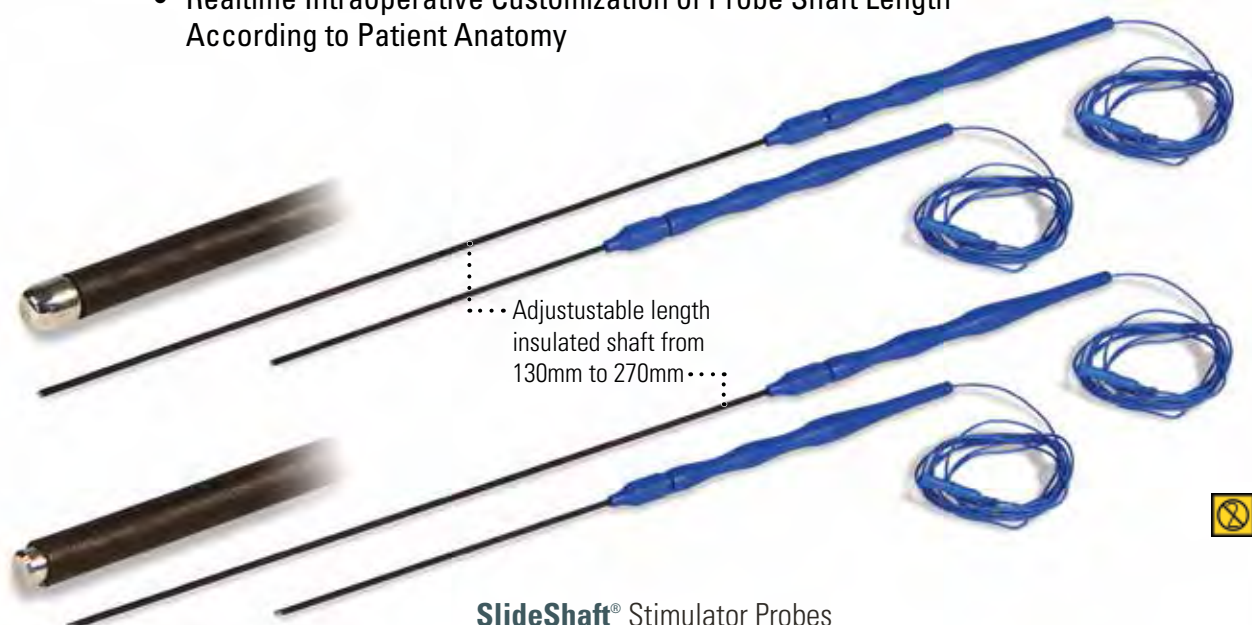
Part Number	Probe Type	Description
360300	Pedicule Screw 3 mm	Disposable, 3 mm ball, 100 mm x 0.75 mm electrode, 1.9 m lead
400800	Pedicule Screw 2.3 mm	Disposable, 2.3 mm ball, 130 mm x 1.9 mm electrode, 1.9 m lead
360200	Monopolar	Disposable, 100 mm x 0.75 mm electrode, 1.9 m lead
360000	Concentric	Disposable, 100 mm x 1 mm electrode, 1.9 m leads
360100	Bipolar	Disposable, 2 x 100 mm x 0.75 mm electrodes, 1.9 m leads
360500	Tapered Monopolar	Disposable, 70 mm x 0.5 mm, uncoated: 0.2 mm
460000	Kartush Concentric	Disposable, sold individually
460400	Kartush Bipolar	Disposable, sold individually
460500	Tapered Monopolar	Disposable, sold individually
400300	Hooked Triple	Disposable, 3 x 38 mm, hook length: 2.4 mm, outer hooks 5 mm, sold individually
400900	Hooked Double	Disposable, 3 x 38 mm, hook length: 2.4 mm, outer hooks 3 mm, sold individually
401500	XL Monopolar	Disposable, sold individually
401600	Kartush Curved Needle	Disposable, sold individually
401700	Kartush Elevator	Disposable, sold individually
420000	Lantern Laryngeal	Disposable, 8/9 mm, includes cable
420100	Lantern Laryngeal	Disposable, 6/7 mm, includes cable



# SlideShaft®

## *Adjustable Shaft Length Neuro-stimulation Probe*

- All Neuro-stimulating Probe Shaft Sizes in One Probe (130mm to 270mm)
- Adjust Probe Shaft Length to Surgical Procedure
- Realtime Intraoperative Customization of Probe Shaft Length According to Patient Anatomy



### SlideShaft® Stimulator Probes



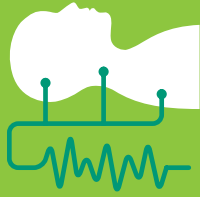
NeuralPathways, LLC

© NeuralPathways, LLC, 2016

Item Code	Description
NP001	SlideShaft®, Single Use Disposable Flush Tip Probe; 0.2mm tip; 2.2mm shaft with adjustable shaft length 130mm to 270mm electrode; 1.9m wire with DIN 42 802 connector
NP002	SlideShaft®, Single Use Disposable Ball Tip Probe; 2.3mm ball with adjustable shaft length 130mm to 270mm electrode; 1.9m wire with DIN 42 802 connector

Sold 5 per box    Sterile    Single patient use only

Part Number	Probe Type	Description	Price
NP001	Flush Tip	Disposable Flush Tip Probe; 0.2mm tip; 2.2mm shaft diameter with adjustable shaft length of 130mm to 270mm; 1.9m wire with DIN 42802 connector	\$375.00/box
NP002	Ball Tip	Disposable Ball Tip Probe; 2.3mm ball tip with adjustable shaft length of 130mm to 270mm; 1.9m wire with DIN 42802 connector	\$375.00/box



## INTRAOPERATIVE NEUROMONITORING

Making Surgery Safer®



SpecialtyCare® is the largest provider of intraoperative neuromonitoring services in the nation, supporting 60,000 cases and 1,700 surgeons every year. Our surgical neurophysiologists work alongside the world's leading surgeons to identify the early signs of evolving neural injury. They're backed by our team of IONM physicians who provide additional support with real-time monitoring via telemedicine, enabling prompt interventions and helping to avoid long-term neural deficit.

With ongoing education through SpecialtyCare University, which includes a fully equipped OR for training, we develop expertise beyond required certifications so that surgical teams can be certain they have the best partner for clinical excellence, always.



SpecialtyCare  
UNIVERSITY™  
IMPROVE • INNOVATE • LEAD



Our IONM Services are  
Accredited and Certified  
by The Joint Commission

### *The certainty of exceptional care*

- Perfusion
- Intraoperative Neuromonitoring
- Sterile Processing Management
- Autotransfusion
- Surgical Assist
- Minimally Invasive Surgical Support

To learn more about SpecialtyCare, call 800.633.3445 or email [info@specialtycare.net](mailto:info@specialtycare.net)

## Rochester Premium SurePoint™ Single Subdermal Needles

- Premium **conical needles** with easy insertion and less bleeding
- High quality wires are reliable, durable and flexible for easier and safer insertion and removal of needles
- Every needle passes our TruTest Quality Assurance System to ensure exceptional reliability and performance
- Volume discounted pricing available



### 10 color assortment packages:

Sterile

Single patient use only

Part Number	Special Feature	Gauge (Needle Diameter)	Needle Length	Wire Length
S0013315	10 colors (25/pkg)	27 ga. (0.40 mm)	13 mm (0.5")	6 ft. (1.8 m)

### Single color packages:

Sterile

Single patient use only

Part Number	Special Feature	Gauge (Needle Diameter)	Needle Length	Wire Length
S02918-P	<b>All Purple</b> (20/pkg)	29 ga. (0.30 mm)	13 mm (0.5")	18" (0.5 m)
S02918-B	<b>All Black</b> (20/pkg)	29 ga. (0.30 mm)	13 mm (0.5")	18" (0.5 m)

## Neurovision™ Dragonfly® Laryngeal Electrodes and Cobra® ET Tube

- Several different inner diameter (ID) sizes
- Sold 5 per box

### Dragonfly® EMG Electrode

Part Number	Channel(s)	Tube Size
LSE600MSP-5	.5	2.0 - 5.5 ID
LSE600M-5	.5	6.0 - 8.0 ID
LSE500MS-5	1	6.0 - 7.0 ID
LSE500M-5	1	7.5 - 10 ID
LSE500DCS-5	2	6.0 - 7.5 ID
LSE500DCL-5	2	8.0 - 9.5 ID

### Cobra® EMG ET Tube

Part Number	Channel(s)	Tube Size
LTE700DCS-5	2	6.0 ID
LTE700DCM-5	2	7.0 ID
LTE700DCL-5	2	8.0 ID
LTE700S-5	1	6.0 ID
LTE700M-5	1	7.0 ID
LTE700L-5	1	8.0 ID

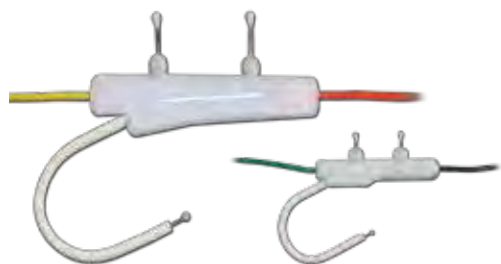


# We BUILD

## Customized Solutions

Have a custom accessory in mind that you know would make your life easier, but can't seem to find anywhere? Rochester Electro-Medical takes pride in working with Technologists, Doctors, and Researchers to create products that are specially designed to fit custom needs. These products range from, but are not limited to: custom packaging, lead extenders, custom plugs, supply sterilization, custom wire ribbons and wire twisting, and custom needle coating. We can't promise we have what you are looking for, but it never hurts to ask!

## **Rochester** UltraFlow™ Respiration Monitors



- Durable and easy to use
- Adjustable to enhance patient comfort
- Three recording points: 2 nasal & 1 oral
- 2 plugs, 1 channel recording



### UltraFlow™ Respiration Monitors

Part Number	Size	Type	Channels	Price
603700	Large	Reusable	2 plugs, 1 Channel	\$120.00 each
603706	Small	Reusable	2 plugs, 1 Channel	\$120.00 each



### DISPOSABLE UltraFlow™ Respiration Monitors (10/pkg)

Part Number	Size	Type	Channels	Price
603775	Large	Disposable	2 plugs, 1 Channel	\$ 72.00 pkg

## **Rochester** No Casing MultiFlow™ Respiration Monitors



- Versatile, ideal for use under C-PAP/BiPAP Masks or with cannulas
- Easily allows separate recording from nasal/oral passages
- Thermocouples are small, yet incredibly durable
- Can be used on any sized patient
- Dual monitor allows multiple recordings on single channel

Part Number	Type	Channels	Price
602548	Single	Single Channel (2 plugs, 1 channel)	\$ 70.00 each
602353	Dual	Single Channel (2 plugs, 1 channel)	\$100.00 each

## *Rochester* Tapes-to-Nose Respiration Monitor

- Fits over bridge of nose for use on patients with oral obstructions
- Use surgical tape to hold in place

Part Number	Size	Price
602532	Extra Small	\$ 75.00 each



## Sleepmate® Airflow Sensors

- Construction allows sensor prongs to be positioned in airflow path
- Comfortable design

Part Number	Description	Price
601401	Adult Thermocouple Sensor	\$136.00 each



## We BUILD Personal Relationships

Rochester Electro-Medical is a third-generation family business that has manufactured Neurodiagnostic Supplies for over fifty years. Rochester takes pride in being a business small enough to provide our customers with personal one-on-one customer support, yet large enough to provide you with the latest accessory innovations at the best prices.

We know that superior patient care is your primary goal. Helping you achieve that goal as efficiently as possible is our priority. Call us today to see how friendly, knowledgeable people can help make your supply purchasing more pleasant and efficient.

Fast & Secure Online Ordering

# Rochester Online

www.rochestermed.com



## Rochester Motion Transducer Button



- Used for infant chest respiration, eye blink and motion detection
- Uses a crystal that generates an electrical output when disturbed by motion
- Can be wired in series for multiple monitoring

Part Number	Price
S0185015	\$ 80.00 each

## Sleepmate® Piezo Respiratory Effort Belts & Sensors



- Adult & pediatric styles
- Adult double loop includes two belts - 1 Large & 1 Medium
- Adjustable belt allows for a customized fit

Part Number	Size	Description	Price
601301	Adult	Double Loop Style	\$ 285.00 each
601310	Adult	Double Buckle Style	\$ 310.00 each
601325	Pediatric	VELCRO® Tab Style	\$ 310.00 each

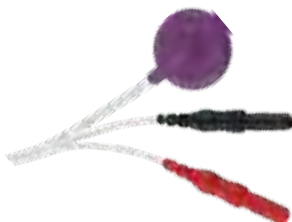
## Rochester MicroSnore™ Snoring Microphone



- Very sensitive: picks up both sound & vibration
- 1.25" microphone diameter, 6 ft. (1.83 m) wire

Part Number	Description	Price
300530	MicroSnore™ Snoring Microphone - 1.5 mm Plugs	\$ 63.00 each

## Sleepmate® Snoring Sensor



- Picks up snoring vibrations
- Compact, low-profile design
- 3/4" (19 mm) sensor diameter

Part Number	Description	Price
601250	Sleepmate® Snoring Sensor	\$ 140.00 each

## NuPrep® Skin Prepping Gel

- Manufactured in the USA by Weaver and Company
- Sold in packs of 3 or cases of 12
- Pleasant aroma, texture and color

- Not sold individually -

PRICE IN GREEN IS FOR COMPARISON ONLY

PRICE IN PINK IS YOUR BEST VALUE

Part Number	Package Size	Price	Comparison (Price each)
711000-3	3/pkg	\$ 23.75 pkg	(\$ 7.92 each)
711000-0	12/case	\$ 88.50 case	(\$ 7.38 each)
711000-QV	3 or more cases	<b>\$ 85.50 case</b>	(\$ 7.13 each)



See ad on page 28!

4 oz. = 114 g

## Ten20® Conductive Paste

- High Quality Conductive EEG Paste that will not harden with long-term use
- Manufactured in the USA by Weaver and Company
- Superior clean-up properties
- Sold in packs of 3 or cases of 12

- Not sold individually -

PRICE IN GREEN IS FOR COMPARISON ONLY

PRICE IN PINK IS YOUR BEST VALUE

Part Number	Package Size & Package Quantity	Price	Comparison (Price each)
702316-3	4 oz. Tubes (3/pkg)	\$ 19.85 pkg	(\$6.62 each)
702316-0	4 oz. Tubes (12/case)	\$ 75.65 case	(\$6.30 each)
702316-QV	4 oz. Tubes (3 or more cases)	<b>\$ 73.65 case</b>	(\$6.14 each)
702335-3	4 oz. Jars (3/pkg)	\$ 19.85 pkg	(\$6.62 each)
702335-0	4 oz. Jars (12/case)	\$ 75.65 case	(\$6.30 each)
702335-QV	4 oz. Jars (3 or more cases)	<b>\$ 73.65 case</b>	(\$6.14 each)
702347-3	8 oz. Jars (3/pkg)	\$ 36.50 pkg	(\$12.17 each)
702347-0	8 oz. Jars (12/case)	\$134.00 case	(\$11.17 each)
702347-QV	8 oz. Jars (3 or more cases)	<b>\$129.00 case</b>	(\$10.75 each)



See ad on page 28!

4 oz. = 114 g

8 oz. = 228 g

# 24 Technologist Accessories

## Elefix Conductive Paste



Part Number	Package Size (Package Quantity)	Price
200697-N	180 gram TUBE (each)	\$ 11.50 tube
200697-0	180 gram TUBE (case of 10)	\$106.00 case
200697-QV	180 gram TUBE (3 or more cases of 10)	<b>\$103.00 case</b>
200690-T	400 gram TUB (each)	\$ 26.00 tub

## Original *Rochester* Electrode Jelly

The Original Rochester  
Electrode Salt Jelly Formula



- Inject through blunted needles to reduce impedances
- Can be used in EEG, EMG/NCS or EP
- Ideal for use with Collodion
- Conductive NOT Adhesive

Part Number	Package Size	Price
701507-F	4 fl. oz.	\$ 9.00 each
701505-P	Pint	\$ 16.00 pint
701500-G	Gallon	\$ 63.00 gallon

## Blunted Needles

- Stainless Steel, 1" (25 mm) length
- Attach to syringes to inject Electrode Jelly into electrodes



Part Number	Gauge (Tip Diameter)	Package Size	Price
000432-19	19 ga. (1.00 mm)	25/pkg	\$ 12.00 pkg
000434-18	18 ga. (1.27 mm)	25/pkg	\$ 12.00 pkg
000436-16	16 ga. (1.65 mm)	25/pkg	\$ 12.00 pkg
000440-200	19 ga. (1.00 mm)	200/pkg	\$ 84.00 pkg
000442-200	18 ga. (1.27 mm)	200/pkg	\$ 84.00 pkg
000444-200	16 ga. (1.65 mm)	200/pkg	\$ 84.00 pkg

## \*LATEX-FREE\* Hypo-Allergenic Surgical Tape & Cover-Roll™



Part Number	Description	Length	Quantity	Price
451115	Transpore™ 1" - clear and porous	10 yds (9.2 m)	12 rolls/box	\$ 28.00 box
777200	Cover-Roll™ stretch bandage - 2" wide adhesive back, can be cut to size	10 yds (9.2 m)	1 roll	\$ 12.00 roll

Cover-Roll™

## Rochester Elena Electrode™ Dolls

Each doll has real EEG cup electrodes attached to the head using VELCRO® brand fasteners, allowing children to “play EEG/ Sleep Tech” while waiting for a test or having a test run.

- Flat, laminated, printed color cards - 4 dolls per set
- Provides a simple and colorful demonstration tool
- Helps to make children less fearful and more relaxed



Elena/Eddie electrode doll set

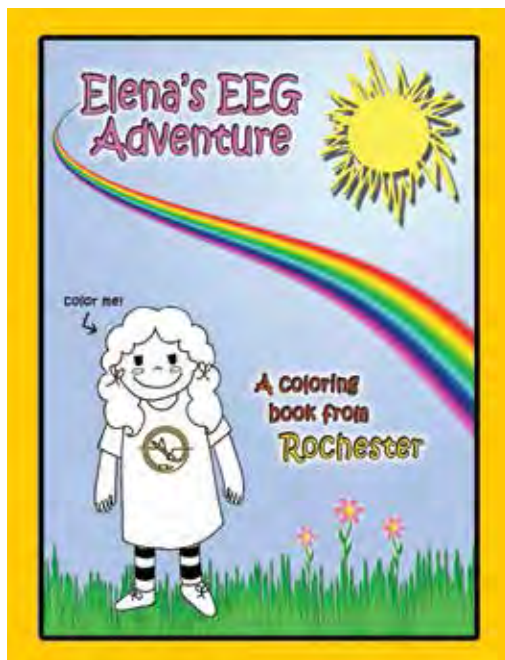
Part Number	Description	Price
400412	Elena & Eddie Electrode Doll Variety Pack - 1 of each - 4/pkg	\$ 20.00 pkg

## Rochester Elena's EEG Adventure Coloring Book

*Elena's EEG Adventure* is a 12-page coloring book, which illustrates an EEG study from a child's perspective

- Helps familiarize the child and parent prior to an EEG
- Great for waiting rooms or as a distraction during hook-up
- Illustrations include integral steps of EEG preparation and testing

Cover



First Page



Crayons sold separately      1 pack = 10 pouches  
1 pouch = 4 crayons



- Smooth, durable, break-resistant
- Non-toxic, conforms to ASTM D-4236
- Each package contains 10 individually wrapped cellophane pouches with 4 crayons each

Part Number	Description	Quantity	Price (1-9 pkg)	Price (10-19 pkg)	Price (20+ pkg)
4010EN	12 Page EEG Coloring Book	10/pkg	\$ 6.50/pkg	\$ 5.75/pkg	\$ 5.00/pkg
4004CR	Non-toxic Crayons	10 pouches/pkg	\$ 3.00/pkg	\$ 2.50/pkg	\$ 2.00/pkg



# 26 Technologist Accessories

## Aids for Application and Clean Up



Comb



Hair Clip



Eye Patch

Part Number	Description	Price
200600	Cotton Tip Applicators - Single Ended - 6" handle - 100/pkg	\$ 2.00 pkg
057000	Gauze Squares - 2" x 2" - Non-Sterile - 200/pkg	\$ 4.00 pkg
450055	Alcohol Preps - 2" x 2" - Individually Wrapped - 200/pkg	\$ 6.00 pkg
200695	Combs, Black - 144/box	\$ 29.00 box
162555	Hair Clips, Multi-Colored - 6/pkg	\$ 7.50 pkg
200610	Eye Patches, Black - each	\$ 3.00 each

## Ives Imaging Friendly™ Electrode Systems

- Conductive Plastic Electrode System: Disc and Harness portions are sold separately
- 21-27 Channel options to choose from
- Color-Coded and Reusable
- Call for more information!

### Imaging Friendly™ Electrode Array (Discs)



Part Number	Package Size	Price
CPE-21/D	21 Channel	\$ 362.25
CPE-23/D	23 Channel	\$ 396.75
CPE-25/D	25 Channel	\$ 431.25
CPE-27/D	27 Channel	\$ 465.75

### Imaging Friendly™ Electrode Harness (Plugs)



Part Number	Package Size	Price
HAR-21	21 Channel	\$ 330.75
HAR-23	23 Channel	\$ 362.25
HAR-25	25 Channel	\$ 393.75
HAR-27	27 Channel	\$ 425.25



## *Rochester* Electrode Applicator

- For use with any low volume air supply
- Keeps electrode in place while evenly dispersing air to dry collodion

Part Number	Description	Price
501500	Electrode Applicator	\$ 69.00 each



## Rotary Vane Portable Air Pump

- High air volume
- Lightweight - only 11 pounds (5 kg)
- 25 psi of air pressure - smooth, continuous air flow
- Fully fused and grounded - ready for use as shipped

8"L x 5"W x 10.5"H Available in 110V, 60 Hz 7 ft. (2.13 m) air hose

Part Number	Description	Price
515000	Portable Air Pump with Footswitch, Tubing & Applicator	\$600.00 each
501600	Add Hubbell Plug	\$ 44.00 each
515005	Glass Replacement Jar	\$ 12.00 each



## UL #544 Laboratory Standard Portable Air Pump

- Medical U.L. #544 approved with Hubbell Plug
- 18 pounds (8 kg)
- 25 psi of air pressure with a high volume, rapidly pulsating jet of air
- Fully fused and grounded - ready for use as shipped

10"L x 5"W x 10.5"H Available in 110V, 60 Hz 7 ft. (2.13 m) air hose

Part Number	Description	Price
518000	U.L. #544 Air Pump with Footswitch, Tubing & Applicator	\$610.00 each



## Foot Valve & Tubing

- Controls piped-in air flow without using your hands
- Includes two separate 7 ft. (2.13 m) lengths of tubing
- For use with our Electrode Applicator (purchased separately)

Part Number	Description	Price
503000	Foot Valve with Tubing	\$130.00 each
500700	7 ft. (2.13 m) Replacement Tubing - 2/pkg	\$ 11.00 pkg



# Nuprep<sup>®</sup>

Skin Prep Gel



Nuprep Skin Prep Gel effectively lowers the impedance between the electrode and the body to improve your tracings. Its mild abrasive formula improves conductivity and helps achieve maximum efficiency with your equipment.

Nuprep Skin Prep Gel is available in two convenient sizes:  
• 3-pack of 4oz (114 g) Tubes • 6-pack of 25 g Tubes



# Ten20<sup>®</sup>

## CONDUCTIVE

Neurodiagnostic Electrode Paste

Ten20 Conductive Paste contains the right balance of adhesiveness and conductivity, enabling the electrodes to remain in place while allowing the transmittance of electrical signals. Ten20's washable and non-drying formula ensures that the paste can easily be removed from the patient.

Ten20 Conductive Paste is available in three convenient sizes:  
• 3-pack of 4oz (114 g) Jars • 3-pack of 4oz (114 g) Tubes • 3-pack of 8oz (228 g) Jars

**Nuprep and Ten20 are designed for use in these medical specialties:**

- Neurodiagnostics
- Cardiac Rehabilitation
- Sleep Studies
- Cardiodiagnostics
- Evoked Potentials
- Stress Tests

**To Order Please Contact:**

***Rochester Electro-Medical***

4212 Cypress Gulch Drive  
Lutz, Florida 33559  
USA  
(800) 328-5544  
[www.rochestermed.com](http://www.rochestermed.com)

Manufactured by:

**WEAVER**

565 Nucla Way, Unit B  
Aurora, Colorado 80011  
United States  
(800) 525-2130  
[www.doweaver.com](http://www.doweaver.com)

## Types of Electrode Wire

Electrodes are made from three different kinds of wire insulation - PVC, Silicone, and Kevlar®. All of our wire is produced to our specifications and is made up of many individual, extremely small strands, making the finished product ultra-flexible. And because we purchase millions of feet of wire every year, we can provide the highest quality at very competitive pricing.

- **PVC wire** looks and feels like flexible plastic. It is light-weight, easy to clean, and can be made into ribbons of colored wire. It has a maximum temperature of 100° C, so it should not be autoclaved.



- **Silicone wire** looks and feels like rubber. It is smooth, extremely flexible, and has a maximum temperature of 150° C. It is heavier and thicker than PVC or Kevlar® insulation.



- **Kevlar® wire** is thinner and slightly less flexible than PVC or Silicone. The wire contains extremely strong para-aramid fiber that makes these electrodes very durable and hard to break. The PTFE coating on these wires is very smooth and has a maximum temperature of 150° C. Kevlar® coated leads are the strongest wires available.



## UltraCoat Insulation

Our specially developed process incorporates 50 years of experience to ensure a smooth, highly friction-resistant PTFE coating on Monopolar Needles and Injectable Monopolar Needles with no insulation breaks. The process used to coat Monopolar Needles is a highly delicate one requiring a great deal of experience to produce the kind of perfect coating required to meet your needs. Our exclusive **UltraCoat Insulation** process produces needles with extremely smooth and consistent insulation, leading to superior dermal penetration that helps maximize patient comfort and easy recording.

# We BUILD

## Innovative Ideas

In the lifespan of our company, neurodiagnostic medicine has emerged from basement biomedical departments around the country to become a staple of mainstream medical practice. From rudimentary electrode systems and paper EEG machines to wireless ambulatory systems and artifact-free imaging devices, Rochester has been through it all. At every step our company has led the way, sourcing materials and developing methods that produce reliable and affordable supplies for hard-working clinicians seeking the best possible care for their patients. The future presents endless possibilities... Let us know what your practice needs to build for the future, and we'll work with you to make it a reality.

## Needles, Electrodes and Measurements

English and Metric Conversions

0.5" = 12 mm	1.0" = 25 mm	24" (2 ft) = 0.6 meters	60" (5 ft) = 1.5 meters
1.25" = 32 mm	1.5" = 37 mm	36" (3 ft) = 0.9 meters	72" (6 ft) = 1.8 meters
1.6" = 41 mm	2.0" = 50 mm	48" (4 ft) = 1.2 meters	90" (7.5 ft) = 2.3 meters
2.5" = 65 mm	3.0" = 75 mm	96" (8 ft) = 2.4 meters	120" (10 ft) = 3.1 meters
4.0" = 101 mm	6.0" = 152 mm	1.5 meters = 60" (5 ft)	2.5 meters = 98.4" (8.2 ft)

English / Metric conversions in this catalog are approximate





## Limited Warranty, General Terms, and Conditions of Sale for Rochester Electro-Medical, Inc. ("Rochester")

**Warranty Information:** Each Item in this catalog is warranted against defects in materials and workmanship for a period of ninety (90) days from the date of invoice. In the event that an item proves to be defective within the warranty period, the obligation of Rochester shall be limited to either repair or replacement of the item or refunding the purchase price less shipping & handling costs, as Rochester may in its sole discretion determine to be appropriate. This warranty shall extend only to the original purchaser and all items must be returned to Rochester's manufacturing facilities via United Parcel Service at purchaser's expense within the warranty period. Return Authorization Number (RA #) is required.

ROCHESTER SHALL NOT BE LIABLE FOR ANY DAMAGES, EITHER DIRECT OR CONSEQUENTIAL. THE FOREGOING WARRANTY AND REMEDY ARE EXCLUSIVE AND IN LIEU OF ALL OTHER WARRANTIES AND REMEDIES WHETHER WRITTEN, ORAL OR IMPLIED. ROCHESTER MAKES NO WARRANTIES AS TO THE MERCHANTABILITY AND/OR FITNESS OF ANY PRODUCT FOR A PARTICULAR PURPOSE. INJURY, INFECTION, OR OTHER DAMAGE RESULTING FROM THE USE OR MISUSE OF ANY PRODUCTS OFFERED BY ROCHESTER SHALL BE THE SOLE RESPONSIBILITY OF THE USER. THIS WARRANTY SHALL NOT INCLUDE FAILURE DUE TO NORMAL WEAR, MISUSE, ABUSE OR DAMAGE FROM IMPROPER STERILIZATION OR HANDLING PROCEDURES. THERE ARE NO OTHER WARRANTIES WHICH EXTEND THE DESCRIPTION ON THE FACE HEREOF.

Sterilization of multiple-use products and their application and use is the sole responsibility of the user. Rochester is not responsible for determining the efficacy of your sterilization methods. PRE-STERILIZED AND/OR DISPOSABLE PRODUCTS ARE INTENDED FOR SINGLE PATIENT USE ONLY. RE-STERILIZATION OR RE-USE OF THESE PRODUCTS VOIDS ANY AND ALL WARRANTIES AND IS A VIOLATION OF FEDERAL LAW.

No person, firm or entity is authorized to either alter, amend or enlarge the terms of this warranty. The final determination of the suitability of the items for the use contemplated by the purchaser is the sole responsibility of the purchaser and/or user, and Rochester shall have no responsibility or liability in connection with such suitability.

Requests for Returns for Credit must be made in writing within 30 days of the date of original invoice. Credit will not be issued unless a Return Authorization accompanies the return and the returned product is in its original, unopened, undamaged package. All items for return must be received, inspected, verified and approved by Rochester before credit can be issued. Returns MUST BE RECEIVED within 30 days of the issuance of a Return Authorization Number. Products received after the 30 day period and/or not accompanied by an RA (Return Authorization) number will not be processed for REFUND, RETURN OR EXCHANGE. No Credit will be issued regardless of the circumstances unless these terms are met.

**Payment Terms** are net 30 days. First time orders require a credit card, C.O.D., PayPal payment or prepayment. All price quotations and shipments are F.O.B. shipping point, unless otherwise specified by Rochester. Domestic shipments are via United Parcel Service unless other shipping arrangements are, in Rochester's sole discretion, deemed acceptable.

Foreign shipments: Terms are by Certified Check, Bank Draft, Credit Card (acceptable card types are the sole discretion of Rochester), PayPal payment or Credit Terms to be established at the discretion of Rochester. All prices and quotations are F.O.B. shipping point. Contact our sales office for information on shipping charges & credit availability.

ALL ITEMS ARE SHIPPED UNSTERILIZED UNLESS OTHERWISE SPECIFICALLY STATED. PRICES EFFECTIVE January 1st, 2016.  
ALL PRICES ARE IN U.S. DOLLARS - PRICES ARE SUBJECT TO CHANGE WITHOUT NOTICE.

Caution: Federal law restricts the devices offered in this catalog to sale by or on the order  
of a Practitioner licensed by the law of the state in which he/she practices.  
Canadian General License # 1631. Some Products listed in this catalog may not be available in Canada.

PayPal: Current terms & conditions regarding Rochester's acceptance of PayPal can be found at <http://www.rochestermed.com>

- 1) All Sterile products are designated as Sterile, Sterilized or Pre-sterilized. Unless this designation is present, the product is NOT sterile when shipped.
- 2) All plug terminations are 1.5 mm Safety Electrode Plugs unless otherwise noted.
- 3) All Electrodes, Respiration Monitors, Products marked as Disposable or for one-time use, and other "patient contact" products are supplied in sealed packages that are NONRETURABLE if the package seal is broken. Examine each package carefully before opening.
- 4) All Claims for REFUND, RETURN OR EXCHANGE must be made within 30 days of the date of invoice.

Rochester Trademarks: Ultrapoint™, UltraLast™, Ultima™, EverLast™, GoldSelect™, NoiseFree™, Horizon™, MultiLead™, SurePoint™, UltraFlow™, MultiFlow™, MicroSnore™, Elena Electrode™ All other trademarks and trade names referenced in this catalog are property of their respective owners. Rochester is not responsible for typographical errors.

For complete warranty and usage information for products distributed by Rochester, please visit the manufacturer's website.

*We*  
**BUILD**

See Page 8  
for Ordering Info!

**DISPOSABLE**

**GOLD**

**ELECTRODES**



**\$0.90 or less  
per electrode!**

for 4ft, 5ft, and 6ft options



***Rochester***

rochestermed.com

800.328.5544



# *Rochester* Order Blank

Facility Name: \_\_\_\_\_ Date: \_\_\_\_\_

Name: \_\_\_\_\_ P.O. #: \_\_\_\_\_

Address: \_\_\_\_\_ ☐ Check if this is a New Address

Address: \_\_\_\_\_

City: \_\_\_\_\_ State: \_\_\_\_\_ Zip Code: \_\_\_\_\_

Email address: \_\_\_\_\_

Quantity	REF #	Description	Price	Ext. Cost

For your first order please include your credit card number, expiration date & security code

Credit Card Number: \_\_\_\_\_

Card Holder's Name: \_\_\_\_\_

Expiration Month/Year: \_\_\_\_\_ Security Code: \_\_\_\_\_

Card Holder's Signature: \_\_\_\_\_

Phone Number: (     ) \_\_\_\_\_

Fax Number: (     ) \_\_\_\_\_

Credit Card Billing Zip Code: \_\_\_\_\_

Type of Business (check one):

Dr.'s Office/Clinic ☐ Hospital ☐

Distributor ☐ (Please List Tax Exempt Number: \_\_\_\_\_)

Other ☐ Specify: \_\_\_\_\_

Sub-Total: \_\_\_\_\_

Shipping: \_\_\_\_\_  
(we will provide a quote)

Sales Tax: \_\_\_\_\_  
(FL only)

Total: \_\_\_\_\_

Desired Shipping Method  
(check only one box)

- ☐ Ground  
☐ 3 Day  
☐ 2 Day  
☐ Overnight

Pricing and Specifications are representations of product offered and are subject to change without notice. Rochester accepts no liability for use or misuse of the product based on specifications printed herein.

**Rochester Electro-Medical, Inc.**  
4212 Cypress Gulch Dr. Lutz, FL 33559-6349 USA  
phone: 800.328.5544 fax: 800.545.0845  
email: [orders@rochestermed.com](mailto:orders@rochestermed.com) website: [rochestermed.com](http://rochestermed.com)



rochestermed.com 800.328.5544

**we BUILD**

## Quality Supplies

## American Products

## Customized Solutions

## Personal Relationships

## Innovative Ideas

***Rochester* Ultrapoint™ Monopolar Needles**  
are Sharper than Ever! Call for your FREE Samples today!

**Providing Quality, American-Made Neurodiagnostic Products since 1960**

Rochester Electro-Medical, Inc.  
4212 Cypress Gulch Dr.  
Lutz, FL 33559-6349

PRSRT STD  
U.S. Postage  
Paid  
Tampa, FL  
Permit #2668



*Rochester*

Word cloud terms include: SURGICAL PROBES, SILVER ELECTRODES, SNAP LEADS, HORIZON SUBDERMALS, CONCENTRIC NEEDLES, SNAP ELECTRODES, ULTRAPPOINT, MONOPOLAR NEEDLES, IONM, THERMOMETERS, TAPE, GAUZE, AMERICAN PRODUCTS, GOLD ELECTRODES, PROBE, LTM, DIGITAL RINGS, PERSONAL RELATIONSHIPS, and many others.